

**TRAINING FOR YOUTH WORKERS AND LEADERS**

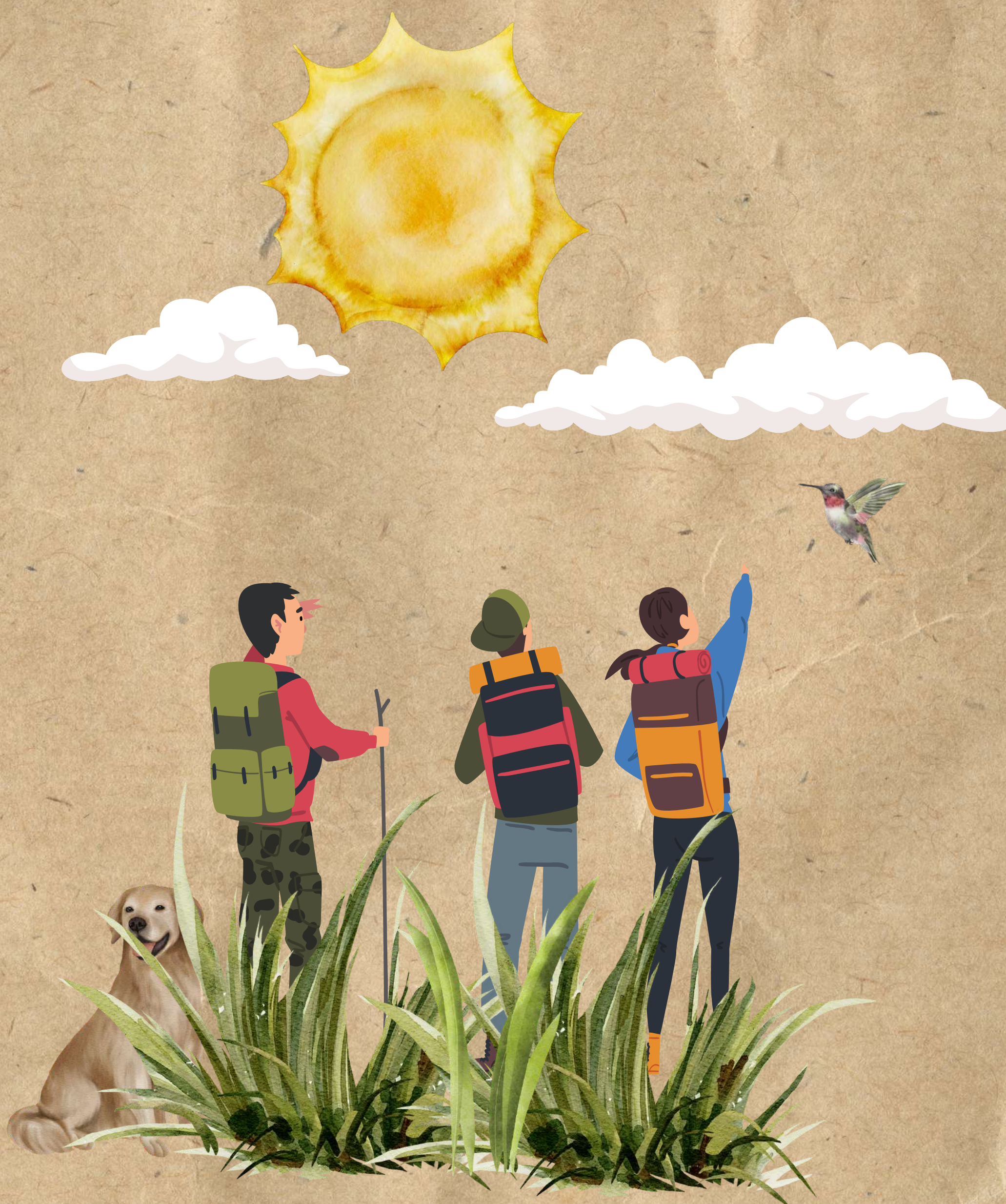
---

# **NATURALISTIC INTELLIGENCE**

## **IN YOUTH WORK**

---

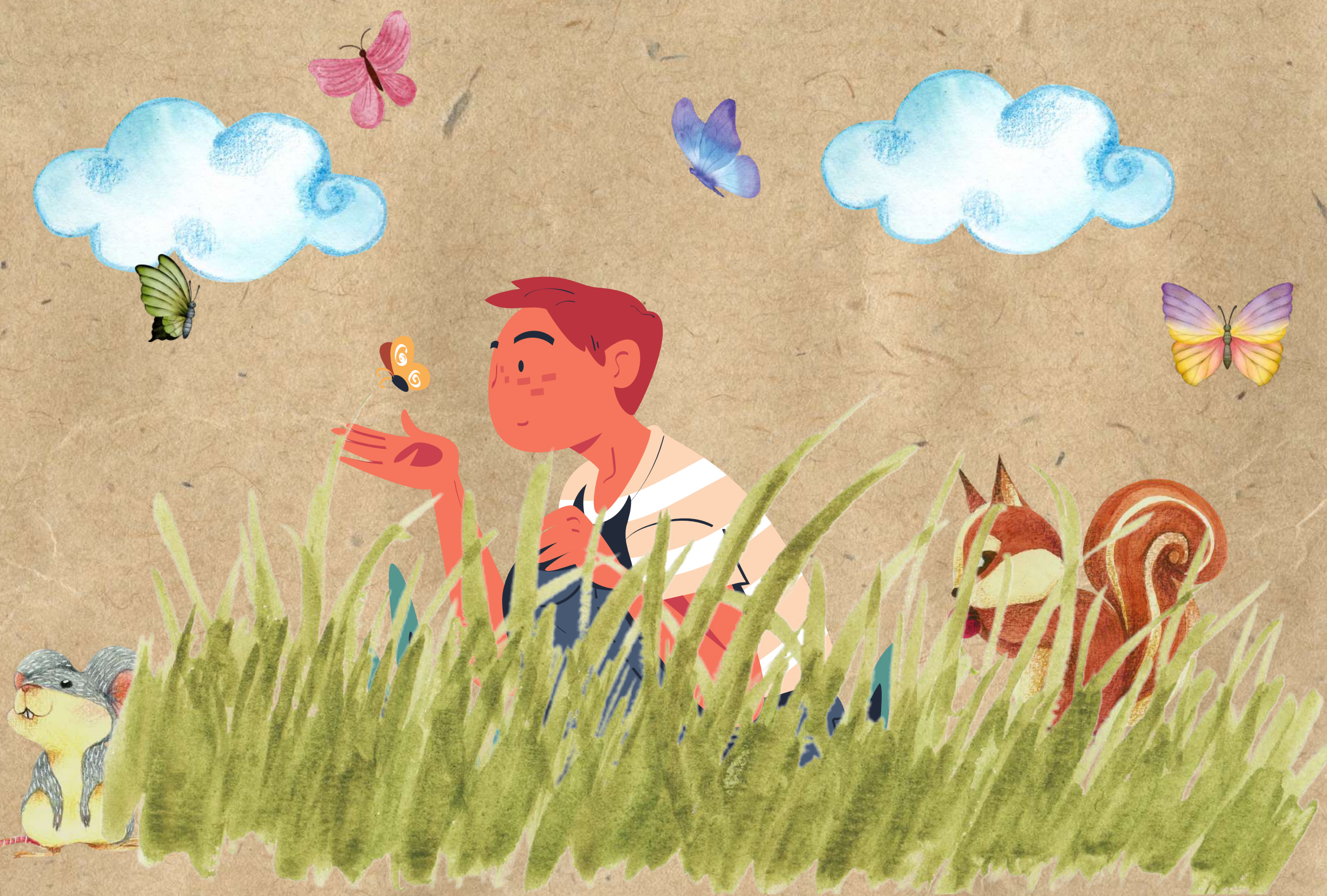
**20. 5. - 26.5. 2024**  
**TRBOVLJE, SLOVENIA**



# ***What is this training about?***

ASPIRA is an Erasmus+ accredited organization dedicated to conducting trainings focused on Gardner's Eight Intelligences. We strongly advocate for a holistic approach to learning, recognizing that each individual possesses unique strengths and weaknesses, with varying degrees of proficiency in different intelligences. In our upcoming training session, we will specifically explore the concept of naturalistic intelligence. Naturalistic intelligence, as recognized by Gardner's theory, encompasses the ability to understand and appreciate nature deeply, allowing individuals to fully immerse themselves in natural environments.

The primary objective of this training is to empower youth workers and leaders to foster naturalistic intelligence within their respective youth communities. By honing the skills necessary to engage with and appreciate nature, participants will gain valuable insights into creating enriching experiences for young people. Furthermore, our training emphasizes the importance of learning in an environment conducive to growth and exploration. What better setting to cultivate naturalistic intelligence than the great outdoors? We look forward to bringing together like-minded individuals in an environment that facilitates experiential learning and personal development.



## ***What will you gain in this training:***

1. Connect with nature and get more familiar with nature's intelligence;
2. Experience and learn various methods and approaches that can help youngsters connect with nature and themselves;
3. Explore possibilities of bringing regular youth work activities in nature;
4. Share nature-based approaches and methods they are using in their youth work.

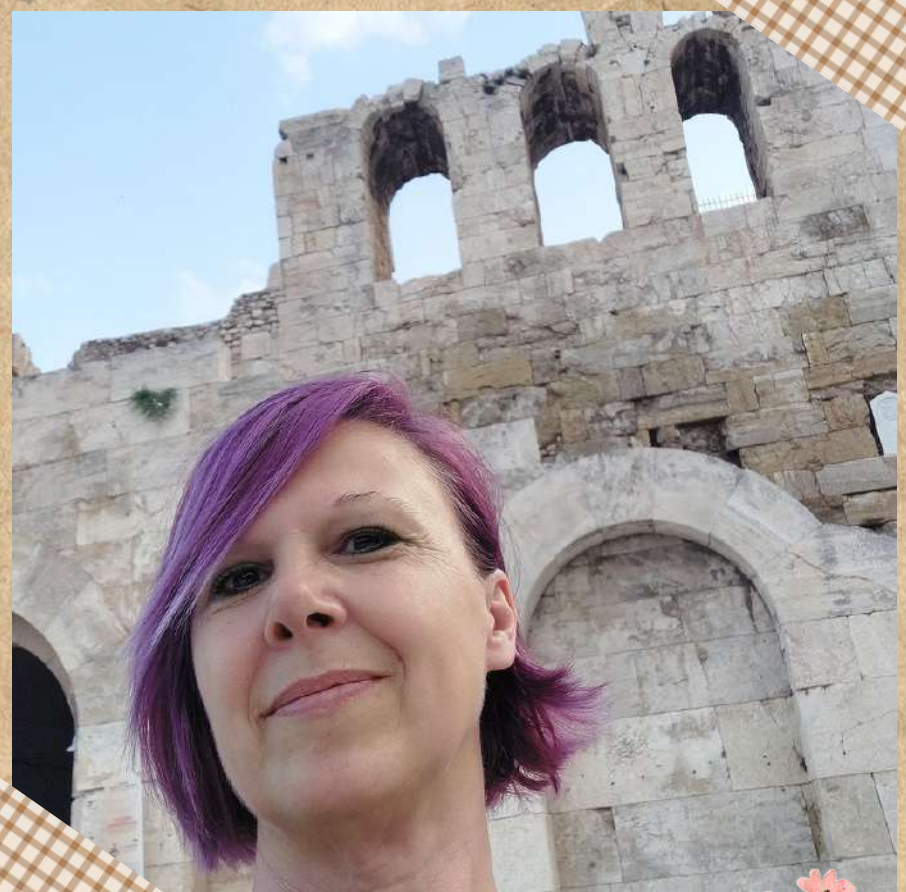
# Trainers

Jaka Kovač is a trainer, facilitator, youth worker, and leader of summer camps and youth exchanges, passionately exploring how to bring education and youth work in nature - the forest has been his playfield and refuge since childhood. He went through various nature-based trainings (vision quest, medicine walks, adventure education, meditation retreats...) and has been leading for several years adventure education and hiking trainings. He is also a Certified Nonviolent communication trainer and Art of Hosting practitioner, on his workshops he enjoys creating a safe, yet stimulating space in which people can connect to nature, themselves, and each other.



Vesna Lenić Kreže is a coordinator for ASPIRA for trainings in Erasmus + accredited projects. She works as a supporting trainer. In her work she combines many creative methodologies as she holds a degree in arts. She has 9 years experience working in youth work

Katarina Nučič is a seasoned professional with over 15 years of experience in diverse areas of youth work. Passionate about generating innovative ideas and facilitating strategic organizational development, she values collaboration and fosters a sense of belonging to address challenges collectively.



**LOGISTIC**  
**venue, food and travel**



**Planinski dom Gore**  
**Gore 42**  
**1431 Dol pri Hrastniku**

Participants will be accommodated at Planinski dom v gorah, it is a traditional Slovenian mountain hut for hikers that you can find all over Slovenia. The venue has 9 bedrooms with 27 beds which will be divided between male and female participants. All meals (breakfast, lunch and dinner) will be provided at the venue.

[https://www.hike.uno/hiking\\_tour/dom\\_v\\_gorah\\_koca\\_na\\_kopitniku/25/789/1414](https://www.hike.uno/hiking_tour/dom_v_gorah_koca_na_kopitniku/25/789/1414)

We will be on a remote location in nature. The hut has an open cafe as well however there is no stores near by. If participants will need to visit a store we will provide means of transport or supply them with items they need.



# Transport



You will be traveling to the town of Trbovlje, from there we will take you to the training location.

## **TRBOVLJE IS REACHABLE BY TRAIN:**

You can reach Trbovlje from the direction of Zagreb, the international train stops in Zidani Most, where you change for the regional or local train to Trbovlje.

<https://potniski.sz.si/en/zagreb/>

By train to Trbovlje from the direction of Ljubljana

Take a local, regional or intercity train from Ljubljana that takes off every hour or even more often ( change the date in the search engine)

[https://potniski.sz.si/en/plan-your-journey/?action=timetables\\_search&t-language=en&departure-date=01.08.2023&entry-station=42300&exit-station=42203](https://potniski.sz.si/en/plan-your-journey/?action=timetables_search&t-language=en&departure-date=01.08.2023&entry-station=42300&exit-station=42203)

## **TRAVELIN TO SLOVENIA, airports that are closest to us:**

<https://www.lju-airport.si/en/>

<https://www.trevisoairport.it/en/>

<https://www.veneziasairport.it/en/>

<https://www.viennaairport.com/en/languages>

<https://www.zagreb-airport.hr> (crossing the border between Slovenia and Croatia can take a bit more time – although in this time of a year maybe not)



## Transfer TO/FROM the airport:

- [https://arriva.si/vozni-redi/?departure-8599=Brnik%2Fairport+Ljubljana&departure\\_id=138867&departure=Brnik%2Fairpor t+Ljubljana&destination=Ljubljana+AP&destination\\_id=138922&trip\\_date=15.12.202 1](https://arriva.si/vozni-redi/?departure-8599=Brnik%2Fairport+Ljubljana&departure_id=138867&departure=Brnik%2Fairpor t+Ljubljana&destination=Ljubljana+AP&destination_id=138922&trip_date=15.12.202 1) (from LJ airport) – the cheapest option, otherwise there are a lot of Taxis and other transfer vans at the airport to catch. You can buy ticket on the spot – price is the same.
- <https://www.goopti.com/en/> (also for Foreign airports) – buy ticket on-line as soon as possible, prices are changeable.
- <https://potniski.sz.si/en/> (timetable, prices, online buy) – you can buy ticket online or on the spot – price is the same.
- In Ljubljana you can exit your transfer at the Main Bus Stop (Avtobusna postaja Ljubljana, <https://www.ap-ljubljana.si/en/>) and you will find a train station nearby <https://potniski.sz.si/en/> (timetable, prices, online buy). The bus station is accross the train station.



Foto: <https://old.delo.si/novice/ljubljana/sz-in-ap-ljubljana-se-brez-dogovora.html>

NOTE: We will organize 3 transports to the training location, The time for the transports and all other details you will receive prior to the training from us. They will probably be in the afternoon.



## ***Travel budget based on your distance***

You can calculate your budget for travel using the Erasmus + Distance calculator <https://erasmus-plus.ec.europa.eu/resources-and-tools/distance-calculator>  
Type in your location and the final destination of the training TRBOVLJE.  
The distance that you get is then compared to the table below.



Travel distance	Standard travel	Green travel
10 – 99 km	23 EUR	/
100 – 499 km	180 EUR	210 EUR
500 – 1999 km	275 EUR	320 EUR
2000 – 2999 km	360 EUR	410 EUR
3000 – 3999 km	530 EUR	610 EUR

## ***APPLICATION PROCESS***

You have to apply through a sending organization!

Provide a short motivation letter that shows your motivation to join the project, your background in youth work, what groups of young people you work with and how you would use the new knowledge.

